



# **MEMBERS AND JUDGES HANDBOOK**

**Australian Heavy Horse Association Inc.**  
**Terms and Conditions and Rules for Membership**

Reg./VAC No. A0113279X  
ABN 67 827 529 093



## Contents

1.	ABOUT THE AHHA INC .....	4
2.	HORSE REGISTRATION .....	5
3.	TRANSFER OF OWNERSHIP.....	5
4.	AHHA MEMBERSHIP.....	6
5.	MEMBER’S RULES AND REGULATIONS.....	6
6.	MEMBER’S CODE OF CONDUCT .....	7
7.	CONDUCT AND DISCIPLINARY PROVISIONS .....	7
8.	OBJECTIONS AND COMPLAINTS PROCEDURE .....	11
9.	DISCIPLINARY PROCEDURE .....	12
10.	ONLINE COMMUNITY GUIDELINES .....	12
11.	EQUINE INFLUENZA.....	13
12.	EQUINE DOPING & DOPE TESTING.....	14
13.	SHOWING RULES AND GUIDELINES.....	15
14.	CONFLICTS OF INTEREST.....	16
15.	STALLIONS .....	17
16.	COMPETITORS AND EQUINES .....	17
17.	SHOWING ATTIRE FOR: IN HAND, RIDDEN AND EVENING PERFORMANCE .....	18
18.	THE JUDGING OF SHOWING CLASSES.....	19
19.	JUDGES IN HAND AND RIDDEN PROCEDURE GUIDE .....	22
20.	JUDGES PANEL .....	23
21.	JUDGES RULES AND GUIDELINES .....	23
22.	SAFEGUARDING POLICY .....	26
23.	DATA PROTECTION ACT STATEMENT .....	26
24.	AHHA DISCLAIMER .....	27
25.	DISCLAIMER OF LIABILITY .....	27
26.	DISSOLUTION.....	27
27.	GOVERNING LAW AND JURISDICTION .....	27
28.	TRADITIONAL GYPSY COB BREED STANDARD.....	27
29.	PART-BRED TRADITIONAL GYPSY COBS STANDARDS .....	29
30.	PURE BREED CLYDESDALE BREED STANDARDS.....	30
31.	PART/CROSS BREED CLYDESDALES BREED STANDARDS (CCHSA).....	32
32.	THE DRUM HORSE BREED STANDARDS (IDHA) .....	33
33.	EXAMPLES OF A SUPREME GYPSY COB AND PURE BREED CLYDESDALE.....	35



# AUSTRALIAN HEAVY HORSE ASSOCIATION INCORPORATED

**This handbook covers the *Australian Heavy Horse Associations'* Showing Terms, Conditions and Rules for Members and Judges.**

**Members, competitors and judges are to familiarise themselves with this document before entering any AHHA Horse Show. Any updates to this document occurring before the next edition is published, will be posted on the AHHA website.**

**Throughout this handbook and on the website, the terms 'AHHA', 'we', "us" and 'our' refer to the *Australian Heavy Horse Association* and 'TGCA' refers to the *Traditional Gypsy Cob Association*.**



# **MEMBERS AND JUDGES HANDBOOK**

## **Australian Heavy Horse Association Terms & Conditions and Rules for Membership**

When becoming a AHHA member or judge or purchasing any service or product from the AHHA you are required to agree and be bound by the following terms and conditions ('Terms of Service', 'Terms'), including those additional terms and conditions and policies referenced within this handbook or published on the AHHA website.

The *Australian Heavy Horse Association* will be the **sole** representative of the *TGCA Ltd* in the territory of Australia and will abide by the operating Framework for Official Country Representatives (i.e. *The Australian Heavy Horse Association*) of the *TGCA Ltd* ' as described within the *TGCA* operating guidelines and members handbook dated 06/03/2026 and as updated by the *TGCA Ltd* from time to time.

The *Australian Heavy Horse Association* will operate in compliance with the rules and regulations, standards and policies of the *TGCA Ltd* as set out in the Members Handbook and other documents including the Studbook Framework and the Stallion grading inspection Scheme.

### **IT IS THE RESPONSIBILITY OF MEMBERS AND JUDGES TO BE FAMILIAR WITH AHHA RULES**

#### **1. ABOUT THE AHHA/TGCA LTD UK**

##### ***The Traditional Gypsy Cob Association (TGCA)***

The *Traditional Gypsy Cob Association (TGCA)* Ltd is the body approved by DEFRA to hold the Mother Studbook for Traditional Gypsy Cobs (TGCs) and as a Passport Issuing Office (PIO) in the UK and European Union. *TGCA Ltd* is a non-profit organisation which has adopted the model articles for private companies limited by guarantee.

The mission of the *TGCA* is to *Preserve, Protect* and *Promote* the very best of our wonderful Traditional Gypsy Cob breed, which originates from the British Isles and makes up the largest population of horses therein. Through our studbook, we aim to record the old established bloodlines and encourage best forward breeding practices so that we can uphold and build upon the legacy of these horses whilst maintaining the quality and true-to-type stamp of Traditional Gypsy Cobs as set out in our Breed Standard.

##### ***The Australian Heavy Horse Association Inc. (AHHA)***

Our Mission is to be a home for all heavies (especially the part-breeds) to promote the different breeds and enjoy our horses together! We welcome you all, no matter your discipline, be it the show ring, eventing, trail riding or purely social wanting to get out and meet others that also love heavy horse breeds.

The AHHA started with a few like-minded people wanting a place for all our heavy horses to be recognised. A conversation between Lisa (our president) and Tony our (vice president) ended up being the start of this wonderful association.

Our aim was to have an all-inclusive home for our heavy breeds and their owners Australia wide. We strive to make our association the very best and go above and beyond to bring new and interesting events and fun activities for our members and their horses. We also know that as horse enthusiasts, owners, breeders, eventers and trail riders, we are all learning something new and wonderful every day and we would like the AHHA to be a place where every member and their horse feel comfortable and part of a family.

Through our affiliation with the *TGCA*, we also aim to *Preserve, Protect* and *Promote* the very best of our wonderful *Traditional Gypsy Cob* breed, which originates from the British Isles and makes up the largest population of horses therein. Australia also has a large Gypsy Cob population and through our studbook, we aim to record these horses as a 'breed' and encourage best forward breeding practices so that we can uphold and build upon the legacy of these horses whilst maintaining the quality and true-to-type stamp of Traditional Gypsy Cobs as set out in our Breed Standard.

## THE AHHA TEAM

We have a very strong group of dedicated individuals working tirelessly and voluntarily for the benefit of our members, breeders and ultimately our beloved breed. The team comprises a President, Vice President, Treasurer, Secretary, Committee Members and Judge, which we collectively term 'AHHA Committee'.

## AHHA ANNUAL GENERAL MEETING (AGM)

The AHHA Committee will invite all current members to an Annual General Meeting (AGM) of the Association at a date and time to be communicated. Members will receive a minimum of six weeks' notice of the meeting taking place and are welcome to submit any comments, questions, or suggestions through the official publicised channels before the meeting.

## AHHA COMMUNICATIONS

In addition to the AGM, the AHHA will communicate with its members through a variety of methods including emails, letters, website, social media, and quarterly newsletters.

## AHHA WEBSITE

Our official website is [www.australianheavyhorseassociation.com](http://www.australianheavyhorseassociation.com). We share a tremendous amount of current information on our website including but not limited to membership forms, horse registration forms, competitions and events, evaluated stallions, our breeds, AHHA contact details and more.

## AHHA FACEBOOK

We have **TWO** Facebook pages; our Official *Australian Heavy Horse Association Inc* (Nation Wide Members) and our *Australian Heavy Horse Association Inc. WA Branch* (for WA members). Our Facebook group page has been set up for all AHHA members from novices to professionals to meet and share pictures, updates, events and shows, ask questions and generally chat about their wonderful Heavy Horse breeds and the Traditional Gypsy Cobs. The AHHA will use this page to keep members and non-members updated with the latest news and information and we will run NEW fun competitions and other offers.

## EQUAL OPPORTUNITIES/NON-DISCRIMINATION

The AHHA operates an equal opportunities and non-discrimination policy in everything we do. We embrace all cultures, colours, origins, genders, disabilities, marital status, religions, and ages.

## 2. HORSE REGISTRATION

For current registration information, our studbook and our performance evaluation scheme please refer to our website [www.australianheavyhorseassociation.com](http://www.australianheavyhorseassociation.com). Once a horse has been registered with the AHHA, it is registered for life.

All horses are eligible to enter any AHHA Affiliated Showing Class.

Stallions (four years and over) **must** have passed a performance evaluation to compete in AHHA Affiliated Shows.

## 3. TRANSFER OF OWNERSHIP

If an equine has ever been registered with the AHHA and is transferred, the new owner **must** notify the AHHA Office within 30 days and forward the requisite transfer fee and paperwork.

The Transfer form **must** be completed and signed by the seller and purchaser.

#### **4. AHHA MEMBERSHIP**

The AHHA annual membership runs in line with a calendar year, i.e., from 1st January to 31st December. A Member of the AHHA is someone who has paid their subscription for the current calendar year. Subscriptions are non-refundable or transferable and are required to be renewed each year. The membership form is available on the AHHA website.

The TCGA Judges Membership runs from 1st November to 31st October and is renewable each year. Judges who fail to renew their membership within 3 months of expiry will be removed from the Judges' panel. Acceptance back onto the panel will not be guaranteed and will be subject to re-approval from the Judge's committee. These can be renewed on the TCGA website [tgca.co.uk](http://tgca.co.uk).

Members will receive benefits as published on the website. These include an invitation to join our community Facebook group, an annual membership, quarterly newsletters and an invitation to the AHHA Annual General Meeting.

Membership cards will be sent to members once the signed membership form has been processed and the fee paid. Members will receive qualification cards for each of their horses registered with the AHHA.

Members should notify the AHHA of any changes to their name, address, or registered horse(s) as soon as they are able and within one calendar month of the change taking place.

#### **REFUNDS AND CANCELLATION OF MEMBERSHIP**

As per the Australian Consumer Law (ACL), a person has 14 days from the date of application within which to notify AHHA by email that they wish to cancel the membership. If notification is received within 14 days, the AHHA will refund the person less any admin fee within 14 days of receipt of notification of cancellation. After 14 days all fees are non-refundable

#### **5. MEMBER'S RULES AND REGULATIONS**

It is a condition of membership that all members, including judging members, abide by the AHHA rules and regulations as explained within this handbook including the specific Members Code of Conduct set out below plus any revisions made and communicated from time to time. By completing and signing the membership form, you confirm that you have read, understood, and agree to abide by these.

The AHHA have the power to refuse any membership without giving a reason.

All Members of the AHHA are bound by its Rules as amended from time to time and shall be deemed to have consented to all the provisions thereof because of all or any of the following:

- submission of a membership application form followed by acceptance of membership
- submission of a request for annual renewal of membership followed by acceptance of such renewal
- registration of a pony
- registration of the lease/loan of a pony or its transfer
- any other act by a member according to the Rules of the AHHA.

## **6. MEMBER'S CODE OF CONDUCT**

The clauses given below indicate the general standard of conduct to which members must adhere. Members shall:

- Conduct themselves to uphold the reputation of the AHHA
- Abide by the AHHA Online Community Guidelines
- Conduct their affairs in such a manner which does not damage the good reputation of fellow members and/or AHHA committee members and/or AHHA representatives and/or the AHHA Association
- Not use the AHHA name to book, order, publicise, advertise, officiate or for any general trading activities and under no circumstances purport to represent the Association in any respect without first obtaining an explicit agreement from the Executive Committee
- Cooperate fully with any investigation into any alleged breach of this Code or the rules and regulations.

Members **must** not act in a manner which is prejudicial to the integrity, proper conduct, or good reputation of AHHA events or the AHHA itself. Members should always have this in mind, including when using social media.

Members **must** familiarise themselves with the requirements and obligations imposed by these AHHA rules which are binding on them. They should bring these rules to the attention of any non-members who may be participating in AHHA activities with them such as connections, helpers, and grooms and do their best to ensure compliance as appropriate. Members are responsible for the actions of any non-members employed or otherwise assisting or acting on their behalf.

AHHA requires everyone involved to behave in a civilised and courteous way towards each other and to uphold the integrity and reputation of the AHHA.

AHHA Officials are required to act in a fair and sporting manner and accordance with the code of conduct and these rules. Members are expected to behave in the same way.

Failure to comply with these rules and the underlying code of conduct may give rise to disciplinary action.

AHHA Officials are volunteers and are appointed to assist the Association. Competitors **must** cooperate with them and comply with any reasonable direction given by an official. Incivility or rudeness to an official is a breach of the rules and code of conduct.

It is not possible to anticipate every eventuality in these rules. They are intended to form an interlocking code for the conduct of the AHHA, each rule **must** be read by reference to the rules as a whole and in the general context of this code of conduct.

If any horse is disqualified from its class because of infringement of any rule, entry fees qualifications and awards may be forfeited. Class placings will also be adjusted accordingly.

## **7. CONDUCT AND DISCIPLINARY PROVISIONS**

The attention of Members and other people is drawn to the disciplinary provisions of the AHHA whereby the AHHA has wide powers to discipline Members and other people in the event of failure to observe any provisions of these Rules or any other regulations, rules and bylaws made by the AHHA. These Rules are intended to ensure that Members compete against each other in AHHA competitions under the fairest possible conditions but inevitably circumstances will arise which are not precisely covered. In such circumstances wherever possible the spirit of the Rules will be followed to produce the fairest result for Members.

Neither the AHHA nor any of its National Committee or Officials or Judges accept any financial responsibility for its or their decisions.

No Member of the AHHA shall conduct himself in a manner or be guilty of behaviour which is derogatory to the character or prejudicial to the interests of the AHHA and (but without prejudice to the generality of the foregoing) no Member shall behave in an offensive or abusive or unpleasant manner to any person at any show or at any other location where AHHA business is being transacted or via social media or the internet or via any publication in whatever format

or via any other written or electronic format. Members' attention is drawn to the AHHA Social Media and Internet Policy set out in this Handbook.

Every Member **must** assist the officers of the AHHA in their investigations of breaches of the Rules and an unreasonable failure or refusal to assist any such officer in such investigation will itself constitute a breach of the Rules.

Members shall not ill-treat ponies at any time whether by misuse or excessive use of a whip or bit or any item of saddlery or in any other way whatsoever and shall not cause or allow a pony to jump any handheld obstacle or to be rapped.

Members are responsible for the actions of any non-members who are Family Members (as defined below) or who are friends or friends of Family Members or who are employed by them or assisting, supporting, or representing them or otherwise acting on their behalf and any action or conduct of such non-member which would be a breach of the Rules were he a Member shall constitute a breach of the Rules by the Member concerned. Family Member shall include a spouse or civil partner, a partner, a direct descendant or ascendant of the Member or his spouse or civil partner, brothers, sisters or adopted children of the Member or his/her spouse or civil partner, or any other person who is part of the same household as the Member or is in the reasonable opinion of the AHHA a member of the Member's family in the widest sense

Failure to observe any of the rules may result in disqualification of the pony concerned and the institution of disciplinary proceedings by the AHHA against the person breaking the rules in accordance with the AHHA Rules. In the event of disqualification of a pony after a cup, rosette or prize money has been awarded, such cup, rosette or prize money must be returned forthwith to the Show or the AHHA as appropriate.

- Any Member or Non-Member or pony or horse that is suspended for any period as a result of any disciplinary action taken by The Show Horse Council (SHC) or Equestrian Australia (EA) may not compete in a AHHA Show or a AHHA affiliated Show during the period of any such suspension unless the Disciplinary Committee, in its absolute discretion, decides otherwise after making such investigations as it deems appropriate.
- Any action taken by the AHHA against any Owner, Rider, Producer or Horse/Pony may be shared with the other member bodies of SHC and EA

Exhibitors will **not** associate with judges immediately before or at any time during the show. Judges will not consult the catalogue at any time before or during the show.

### **Policy and Procedure for Behaviour (Applicable to members and non-members)**

The AHHA INC (Australian Heavy Horse Association) is committed to providing a quality service to all our customers, members, and applicants for our service. We expect everyone who meets our AHHA team, staff, and volunteers to treat them with respect.

We understand that, in times of trouble or distress, people may act out of character, and, in a very small number of cases, may behave in an unacceptable way despite our best efforts to help. This makes it difficult for us to deal with queries or complaints effectively. We also have to protect the welfare and safety of our staff team and volunteers. They should be able to carry out AHHA duties without fear of violence, abuse, harassment, or discrimination.

### **Purpose Of This Policy**

This policy means we can manage unacceptable customer behaviour consistently and fairly. It sets out clearly what we consider to be unacceptable and the steps we may take to deal with such behaviour. It applies to everyone who accesses The AHHA services to help us protect staff, members and volunteers from abuse and harm.

## Principles

You can expect that the AHHA will always:

- Provide a fair, open, proportionate, and accessible service
- Listen and understand
- Treat everyone who contacts us with respect, empathy, and dignity
- We expect people accessing our services to:
  - Be courteous
  - Engage with us in a way that does not hamper our ability to carry out our work effectively and efficiently for the benefit of all
  - Safeguarding and disclosures
- If an individual threatens to harm themselves or others during our work, we will consider disclosing this to a relevant health professional. We may also contact the police if others are threatened with harm.

## Definition Of Unacceptable Behaviour

Unacceptable behaviour means acting in an unreasonable way, regardless of the level of someone's stress, frustration, or anger. It may involve acts, words or physical gestures that could cause another person distress or discomfort. Aggressive Or Abusive Behaviour. This behaviour or language (written or spoken) could cause our staff to feel afraid, threatened or abused. This includes threatening emails, telephone calls, meetings, and comments on social media (see social media policy) or elsewhere.

### For example:

- Insulting or degrading language, including inappropriate banter, innuendo, or malicious allegations
- Any form of physical violence or threats of physical violence
- Derogatory racist, sexist, ageist, or homophobic remarks
- Comments relating to disability, perceived gender, religion, belief, or any other personal characteristic
- Unreasonable demands and vexatious complaints
- Customers might make requests that we cannot reasonably accommodate. This may include but is not limited to:
  - the amount of information they seek
  - the nature and scale of service they expect
  - the volume of correspondence they generate
  - a remedy or outcome that cannot be achieved.

We accept that someone persistent is not necessarily guilty of unacceptable behaviour. What is seen as an unreasonable demand will depend on the circumstances of each case and we will always consider each complaint on its own merits.

However, the behaviour of someone who persistently contacts us about the same issue, when that issue has been dealt with in line with the AHHA's usual processes, can in some circumstances, amount to an unreasonable demand. Such behaviour takes up a disproportionate amount of our time and resources and can affect our ability to provide a service to others.

### Examples of behaviour which we consider unreasonable demands and vexatious complaints include but are not limited to:

- Refusing to follow our complaints procedure
- Persistently pursuing a complaint where the AHHA complaints procedure has been fully, properly implemented, and exhausted, but no appeal has been made. Or after the Disciplinary Team has considered and concluded the case, making a further complaint on the same issue
- Contacting us repeatedly and frequently without giving us enough time to respond to previous correspondence
- Insisting on seeing or speaking to a particular member of staff when a suitable alternative has been offered
- Visiting The AHHA offices without an appointment
- Focusing disproportionately on a matter in relation to its significance and continuing to focus on this point despite receiving proportionate responses addressing the matter
- Adopting a 'scattergun' approach: pursuing parallel complaints about the same issue with different members of the AHHA team

- Threatening or using actual physical violence towards staff or their associates
- Being personally abusive or verbally aggressive towards the AHHA team dealing with their issue or their associates
- Recording meetings or conversations (whether face-to-face or on the telephone) without the prior knowledge or consent of other people involved.

### **How We Will Respond to Incidents of Unacceptable Behaviour**

We do not expect The AHHA team to tolerate unacceptable behaviour when communicating with our customers. When this happens, The AHHA Team has the right to:

- Place callers on hold
- End the call
- Not reply to an abusive email or letter - we will only review these communications to ensure no new issues have been raised.

Before taking such action, we will always warn customers that they are behaving in an unacceptable way to give them the chance to change their behaviour. However, a warning will not be given in extreme cases to protect the team, for example, when a physical threat is made.

### **Where these circumstances arise, we will take the following steps:**

We will ask customers to modify their behaviour and explain why and if the behaviour continues to be unacceptable, our employees will remove themselves from the situation. If communication is by telephone, the caller will be told that the call will be ended.

The employee will inform their manager who will keep a record of the incident. In all cases, a manager will investigate the situation and decide what action to take. This could include limiting a customer's contact with us. AHHA will refer the matter to the police where a criminal offence has been threatened or committed.

### **Communication Restrictions**

If customers continue to behave unacceptably, The AHHA team can put in place a temporary or permanent communication restriction on a customer. If we decide to do this, we will tell the customer that we are doing, so setting out:

- Why do we consider their behaviour unacceptable
- What action we are taking and if there is a time limit on the restrictions.

If we decide to limit communication, we will make a note of the limitation in our records. Communication might be:

- Limited to being conducted in writing
- Limited to a specific individual
- Removed from AHHA social media and blocked from our accounts
- Limited to a specific email address or telephone number
- Placed on file without a further response if the issue raised in the correspondence has previously been considered
- Limited in other ways which we consider appropriate in the circumstances, in line with this policy.

In addition, we reserve the right to:

- Limit telephone contact to set times on set days
- Restrict contact with a nominated employee who will deal with all future calls or correspondence  
Restrict the issues on which we will correspond
- Block emails or telephone numbers if the number and length of communications sent are excessive  
Refuse to consider a complaint or any further contact in exceptional circumstances
- Take any other action which we consider necessary or appropriate to make this policy effective
- Where circumstances are serious enough to warrant further restrictions, we may take legal action to prevent further contact/poor behaviour.

In making any decision to take legal action in such cases, we may consider:

- How legal action may affect our staff
- How legal action may affect the individual (including their personal circumstances and any reasonable adjustments)
- The extent to which we can engage or assist
- The extent to which the process or subject matter has been exhausted.

### **Review**

We will regularly review any decision to restrict communications and when appropriate we may lift some or all restrictions.

### **How we will take account of our duties under the Equality Act 2010**

We make sure that we meet the requirements of the Equality Opportunity Act 2010 (Vic). This includes making sure we consider adjustments for people with protected characteristics.

Some people may have difficulty expressing themselves or communicating clearly and/or appropriately. We will always consider the needs and circumstances that we have been made aware of before deciding how best to manage the situation. This will include making reasonable adjustments. However, this does not mean we will tolerate abusive language, shouting, or other unacceptable behaviour or actions.

If an individual with a protected characteristic becomes the subject of a restriction under this policy, we will consider whether the restriction may affect them more than someone without that characteristic. If this is the case, we may make different arrangements.

## **8. OBJECTIONS AND COMPLAINTS PROCEDURE**

Any objection or complaint relating to the rules of a particular Show Executive should be made to that Show Executive in accordance with the procedure set out in such rules, except a complaint relating to an AHHA Judge.

Members wishing to register an objection or complaint, whether it is against the Judge, Exhibitor, or the organiser of a Show or otherwise, should write to the AHHA Office and they **must** be received within fourteen days of the date of the event giving rise to the objection or complaint. **THE LETTERS MUST BE SENT BY REGISTERED MAIL OR BY READ RECEIPT EMAIL.** The matter will then be dealt with in accordance with the procedure laid down in the AHHA Rules.

Whilst officiating, an AHHA Judge or Steward, when wishing to register an objection or complaint against a member, should write to the AHHA Office. **THE LETTERS MUST BE SENT BY REGISTERED MAIL OR BY READ RECEIPT EMAIL.** The matter will then be dealt with in accordance with the procedure laid down in the AHHA Rules.

A Show Secretary wishing to register an objection or complaint against a Judge or member should write to the AHHA Office. **THE LETTERS MUST BE SENT BY REGISTERED MAIL OR BY READ RECEIPT EMAIL** and **must** be received within fourteen days of the date of the event giving rise to the objection or complaint. The matter will then be dealt with in accordance with the procedure laid down in the AHHA Rules.

Complaints will be treated confidentially and presided over by a Disciplinary Committee (comprising a minimum of three AHHA Committee Members) who will determine whether there has been a breach of the rules of the association and, if, in its opinion, there has been such a breach, it will decide what, if any, action is warranted.

The Disciplinary Committee will deal with any complaint by way of written submissions only and no party shall be entitled to attend in person or be represented. The ruling of the Disciplinary Committee will be final, and the decision communicated to those directly affected by the complaint, including the complainant.

## 9. DISCIPLINARY PROCEDURE

In the event a judge or member is found to be in breach of the rules and regulations or the code of conduct the AHHA has the power, in its absolute discretion, to suspend or expel that member/animal from membership or to invoke the following remedies:

1. Reprimand said person and warned of their behaviour
2. Fine said person up to a maximum of \$250
3. Disqualify and remove class placing of the exhibit
4. Suspend or Expel exhibit from entering any AHHA shows or affiliated classes
5. Remove or suspend from the Judges' panel.

If a fine has been given and said person does not pay the fine within 28 days of notification, then the following action will be taken: Membership if in place will be suspended until the fine is paid in full. If not a member, any horse/pony owned by a said person at the time of the fine and whilst they have not paid the fine will not be allowed to enter any AHHA shows or affiliated classes.

## PUBLICATION OF DECISIONS

Any decision of the Disciplinary Committee, Judges' Enquiry Committee or the Stewards made pursuant to the powers conferred by these Bylaws may be published on the AHHA website, in any newspaper or periodical published by the AHHA or as the Disciplinary Committee may direct."

Any Owner, Rider, Producer or Horse/Pony that is suspended for any period as a result of any disciplinary action taken by any member body of The Show Horse Council (SHC) and Equestrian Australia (EA) may **not** compete in AHHA Affiliated classes at the discretion of the AHHA. Any action taken by the AHHA against any Owner, Rider, Producer or Horse/Pony may be shared with the other member bodies of the SHC and EA.

## APPEALS

An individual may appeal against a decision and penalty though this must be lodged in writing and sent recorded postage to the AHHA Head Office within 10 days of the decision being notified, along with a \$150 deposit which will be non-refundable in the event of the appeal being unsuccessful.

Appeals will be considered by the full AHHA Committee, and their decision will be final and binding for all parties concerned.

Any decision made in any of the above cases may be published in the AHHA newsletter and/or website.

## 10. ONLINE COMMUNITY GUIDELINES

The AHHA wants to promote a friendly, informative, and enjoyable online experience for members of the Facebook community and website forum. Therefore, content and comments not in this spirit are not allowed and will be removed. At all times members **must** be respectful of our Social Media Policy (below) and other AHHA members, competitors, and professionals.

We are proud to be an open, approachable, and honest Association, however, members venting frustration online is damaging and off-putting to fellow members. Any grievances or sensitive questions should be detailed in writing and sent by email or post to AHHA Head Office. That way we can take appropriate action and respond accordingly, maintaining integrity for all parties.

Our standard membership communication channels for registrations, memberships, studbook, DNA, shows, complaints, and general enquiries are published on our website. **Please be aware that our Facebook page forum is not intended as replacements for these.**

## **SOCIAL MEDIA & INTERNET POLICY**

The AHHA will always manage all online platforms and social networking sites responsibly and with integrity and sensitivity.

The AHHA acknowledges the importance of the internet and social media sites such as Facebook, Twitter, LinkedIn, home webpages, chat rooms and all other forms of electronic communication and the role which 'social media' plays in the day-to-day lives of members.

This policy note is to remind members that the Rules of the AHHA apply to members when using social media and the internet. Failure to adhere to this policy could lead to disciplinary action being taken against a member.

The Association will **not** enter into debate in response to intentionally negative comments, baited questions, unfounded or unproven accusations, speculation or any other hearsay directed at individuals or organisations.

### **USE OF SOCIAL MEDIA**

Please be aware that the AHHA may from time-to-time conduct internet searches to identify postings which include references to the AHHA and its members.

The blocking by any person of AHHA Admin on our Social Media pages will result in the immediate removal of said person from AHHA social media pages.

The AHHA produced images are subject to copyright and should not be copied or used in social media save as provided in the AHHA website user terms and conditions.

Please ensure that any material that you transmit or post to social media is clearly stated to be your personal view and is not held out to be, or could be mistaken as, the view of the AHHA.

You **must not** post or transmit any material which could damage the name or reputation of the AHHA, its members or former members, or which is derogatory to the character of or prejudicial to the interests of the AHHA

You **must not** post or transmit any material relating to the AHHA, members or former members or their horses or ponies, or which could otherwise be associated with, or which may reasonably be attributed as coming from the AHHA:

- that is threatening, defamatory, obscene, indecent, seditious, offensive, Pornographic, abusive, liable to incite racial hatred, discriminatory, menacing, scandalous, inflammatory, blasphemous, in breach of confidence, in breach of privacy or which may cause annoyance, distress or inconvenience; or
- which constitutes or encourages conduct that would be in breach of the AHHA Rules, or constitutes a criminal offence, or which could give rise to civil liability, or otherwise be contrary to the laws of, or infringe the rights of any third party in, Australia or any other country in the world.

Any breach of this policy may constitute a breach of the AHHA Rules and could also lead to civil and/or criminal proceedings being brought against you.

## **11. EQUINE INFLUENZA**

Equine influenza (EI) is an exotic, highly contagious respiratory disease in Australia, officially declared eradicated in 2008. No routine vaccination is available domestically, and if suspected, it is a reportable disease requiring immediate quarantine. *Disclaimer: As Equine Influenza is not currently present in Australia, these guidelines are based on biosecurity protocols designed to prevent its re-introduction.* This Rule may be subject to change from guidance from the Department of Agriculture, Fisheries and Forestry (DAFF) and any changes will be notified via the [australianheavyhorseassociation](http://australianheavyhorseassociation.com.au) website.

## **12. EQUINE DOPING & DOPE TESTING**

### **Warning to Members**

The AHHA operates a zero-tolerance policy concerning equine doping. It is the responsibility of every owner/handler to ensure that any equine for which they are responsible is free from prohibited substances. In common with other similar bodies, the AHHA. takes a very serious view of doping, whether intentional or unintentional, having regard to the safety of children. Members should be aware that many proprietary feeds and preparations contain Prohibited Substances (as defined below) as do many foods such as chocolate.

Prohibited Substances can be absorbed through the skin, and they are also contained in some homoeopathic and herbal remedies including calmers. It is the responsibility of the Member having custody of a pony, particularly in the twenty-four hours before a Show, to ensure that nothing is fed, administered, or applied to a pony that contains a Prohibited Substance. Ignorance is not an adequate defence.

The AHHA is not authorized to give guidance, but the AHHA follows the FEI Equine Prohibited Substances List ('EPSL') as published from time to time by the Federation Equestre Internationale ('FEI') and Equestrian Australia. Where appropriate the AHHA will adopt threshold, levels published in the EPSL.

Please note that the EPSL includes any other substance with a similar chemical structure or similar biological effect(s) as substances specifically mentioned on the list. All substances on the list, whether indicated as 'Banned' or 'Controlled', are prohibited substances under the AHHA Rules. Also prohibited are 'Metabolites' of the substances and 'markers', both terms being defined below

- 1**
  - a)** Any pony taking part in classes judged under AHHA Rules will be liable to Dope Testing (as defined below) in accordance with the Dope Testing procedure laid down by this Rule. A refusal to submit a pony for Dope Testing shall constitute a breach of this Rule.
  - b)** The presence in the tissues, body fluids, excreta, hair, or skin of a pony of a Prohibited Substance (as defined below) shall constitute a breach of this Rule by the Owner and/or Producer and/or any other person within Rule 63(1)(e).
  - c)** "Dope Testing" means the examination of a pony by a duly qualified person appointed by the AHHA and includes the taking of samples for subsequent analysis of all or any body fluid, tissue, excreta, hair, or skin scrapings at the discretion of the person conducting the examination.
  - d)** "Prohibited Substance" means any quantity of any substance listed as a 'Banned' or 'Controlled' substance on the Equine Prohibited Substances list ('EPSL') as published by the Federation Equestre Internationale ('FEI') and in force from time to time excluding any quantity of any substance under any threshold level specified in the EPSL but including any other substance with a similar chemical structure or similar biological effect(s) as any substance on the EPSL and also including any metabolites of such substances and any markers. The terms metabolite and marker shall have the same meaning as in the FEI Anti-Doping and Controlled Medication Regulations as published by the FEI from time to time.
  - e)** Any person who administers or attempts to administer or allows or causes to be administered or connives or promotes or encourages at the administration to a pony of a Prohibited substance shall be guilty of a breach of this Rule.
  - f)**
    - (i)** Whenever a positive dope test occurs, the matter shall be referred to the Disciplinary Committee of the AHHA within 14 days of either the expiration of the period for requesting confirmatory analysis of Sample B or the receipt by the AHHA of a positive analysis of Sample B whichever is the later.
    - (ii)** The Disciplinary Committee shall investigate the matter and decide within fourteen days of referral pursuant to Rule 63 (1)(f)(i) whether or not to institute disciplinary proceedings for a breach or breaches of this Rule against the Owner and/or Producer and/or any other person within Rule 63(1)(e).

## Sampling Procedure

- 2
- a) Dope Testing may be conducted by personnel authorized and should take place as soon as possible after the participation of the pony in its class provided that it does not interfere with its programme in which case the Dope Testing should take place as soon as possible after the pony has completed its programme.
  - b) It is the responsibility of the person in charge of the pony whether it be the Owner or the Producer or other person to supervise the pony from the time of notification of selection for Dope Testing until completion of the Dope Testing.
  - c) The Owner, Producer, or other person responsible for the pony or his representative shall be entitled to witness the Dope Testing from outside the loose box, horse box or testing area without disturbing the pony but if any such person is not present the Dope Testing will proceed in any event.
  - d) All samples taken must be kept in a secure place and dispatched to the laboratory selected by the AHHA as soon as reasonably possible after collection.
  - e) The sample must be divided into two parts hereinafter referred to as Sample A and Sample B and the initial analysis of Sample A must be completed within 21 days of receipt of the sample by the laboratory. If the initial analysis produces a suspicious positive result, then the AHHA may grant such an extension as the laboratory requires to complete the analysis.
  - f) If the result of the analysis of Sample A is negative, then the laboratory may forthwith destroy Sample B.
  - g) If the result of the analysis of Sample A is positive then the Owner or Producer may require confirmatory analysis of Sample B, by any laboratory approved by The Horseracing Forensic Laboratory provided that a written request for such confirmatory analysis is received by the AHHA within 14 days of dispatch by the AHHA of notification of a positive analysis of Sample A.
  - h) The Owner or Producer may request that findings be made in respect of particular matters during the analysis of Sample B on the basis that they will be responsible for all additional costs incurred whatever the result of the analysis of Sample B
  - i) Upon receipt of a valid request for confirmatory analysis of Sample B, the AHHA shall inform the laboratory immediately and the laboratory shall carry out the analysis of Sample B as soon as reasonably possible.
  - j) If the result of the analysis of Sample B is positive, then the person requesting the analysis shall reimburse the AHHA the cost of the analysis of Sample A and Sample B forthwith on demand.
  - k) If the result of the analysis of Sample A is positive and no valid request for confirmatory analysis of Sample B is received, the Owner shall reimburse the AHHA the cost of the analysis of Sample A forthwith upon demand.

## 13. SHOWING RULES AND GUIDELINES

1. All colours are acceptable, colour and markings should **not** be considered whilst judging, and wall/blue eyes and freeze marking are **not** to be penalised.
2. Horses (Including Gypsy Cobs) should be shown in their natural condition; only **minimal** trimming of jawline and ears is permissible. Trimming inside of the ears and removal of sensory whiskers is **not** in line with the AHHA welfare policy.
3. Clydesdales over two years of age should be plaited up with a mane roll and their tails plaited.
4. Body clipping of all equines is permitted for welfare reasons and should not be penalised.
5. A long mane and tail and a natural abundance of feather is expected. The feather should completely cover the whole hoof and an abundance of silky straight feather, is preferable to coarser curly hair/feather. Hair extensions are not permitted in any form whatsoever.
6. All animals shall be sound in both wind and limb.

7. The AHHA has zero tolerance for obese horses. Any exhibit that, in the judge's opinion, is obese will be asked to leave the ring. This includes overproduced young stock.
8. Exhibits **must** be entered into the class specific to their age as of the 1st of August in the current year. Verifications will be conducted at the discretion of the Show Committee and may be carried out at shows at the discretion of the judge.
9. Exhibits **must** be entered into the class specific to their height and/or age. Spot checks will be conducted at show at the discretion of the Show Committee and may be carried out at qualification shows at the discretion of the judge.
10. All exhibits in ridden classes **must** be 4 years and over as of 1st August in the current year. At all times, same for conformation judging, exhibits **must** be ridden under saddle whilst in the ring.
10. Judges and/or stewards have the power to ask any exhibit to leave the ring/show if that exhibit shows bad or dangerous behaviour. The AHHA also have the right to suspend that exhibit from other shows until it has been assessed by the AHHA.
11. Show organisers have the power to ask exhibitors to leave the showground for unruly behaviour whether inside or outside the ring.
12. All exhibitors including grooms **must** be dressed correctly whilst in the ring. Please see the sections on showing attire.
13. Riders may be any age but **must** be suited for the size of their exhibit.
14. Riders and handlers of stallions must be 18 years old or older (as of 1st January in the current year).
15. Spurs **must not** be worn by junior riders (under 18 as of 1st January in the current year) or any rider of an exhibit 148cm and under. Mixed-height classes, no competitor may wear spurs.
16. No earrings or body piercing can be worn in the ring; this is an OHS requirement.
17. The Judge's decision is **ALWAYS** final.

#### 14. **CONFLICTS OF INTEREST**

Exhibitors will **not** exhibit under Judges where an actual or apparent conflict of interest may affect the judge's decision. An actual or apparent conflict of interest is defined as exhibiting a horse which:

1. has been bought or sold by the judge either as owner or agent.
2. is owned in whole or part by the judge or by a member of the judge's family or business partner in a business venture.
3. has been bred by the judge or is the property of a breeding organisation in which the judge is or was an employee.
4. has been leased by the Judge at any time.
5. has been regularly trained, examined, or treated by the judge in a professional capacity.
6. has been shown/produced by a member of the Judge's immediate family during the last twenty-four full calendar months. The following are classed as immediate family. Grandparents, Step Grandparents, Parents, Stepparents, Partners of Parents, Parents in Law, Legal Guardian, Husband, Wife, Cohabitee, Partner, Brother, Stepbrother, Brother-in-Law, Sister, Stepsister, Sister-in-Law, Son, Stepson, Son in Law, Daughter, Stepdaughter, Daughter in Law.

7. is the subject of an ongoing negotiation to buy or lease, or a provisional purchase condition to which the Judge is party.
8. an exhibitor/owner must not enter any horse under a Judge during the twenty-four full calendar months after that judge has regularly professionally handled, shown, or produced that or any other horse for that exhibitor/owner. Training clinics where the judge does not touch the horse are excluded from this rule.
9. if a handler/rider produces or shows a Judge's own horse, that handler/rider must not bring any horse under that judge during the next twelve full calendar months
10. is sired by a stallion which is/has been in the ownership of the judge during the current calendar
11. has been bred to by the judge during the current calendar year.

Handler or Rider **not** to have been paid for showing or producing any horse associated with the Judge, this includes any remuneration either as employment, Use of Stallions for Stud, casual showing, or any kind-kind benefits whatsoever.

## 15. STALLIONS

Stallions 4 years and over **must** have passed a performance evaluation to compete in any AHHA affiliated class.

Stallions **must** always wear a **GREEN** Stallion bridle disc on the offside of their bridle when competing in AHHA classes and/or shows. All colts/stallions **must** always be well-mannered and under control.

Riders and handlers of stallions **must** be 18 years old or older (as of 1st January in the current year).

Colts/Stallions two-year-old and over **must** be shown in a stallion bridle with a metal bit and chain lead.

The use of a stallion harness is permitted on stallions over the age of four. The judge may ask that the side reins are unclipped when in the class.

To retain continuity of supply of covering certificates for Breed evaluated stallions, it is stipulated that the stallion owner's membership **must** be maintained (including time of covering), which is renewable on an annual basis. Membership runs from 1<sup>st</sup> January to 31<sup>st</sup> December.

Stallion owners **must** return covering certificates by 30th November of the covering year.

**Grade Evaluations** - all up to date information can be found at <https://www.australianheavyhorseassociation.com>

## 16. COMPETITORS AND EQUINES

Girths should be plain white, brown, or black; as should numnahs if worn. Bits should be a simple snaffle, pelham or double bridle. Brass-in-hand bridles are **not** to be used in ridden classes.

Judges may take into consideration the severity of the bit, their opinions on suitable bridles may vary and their decision is final.

First ridden and Novice classes, snaffle bridles only may be used.

Junior ridden classes: snaffle bridles only may be used.

Lead rein ponies **must** be shown in a snaffle bridle only and lead reins may only be attached to the noseband.

Flash and drop nosebands are **not** permitted for ridden classes on the flat.

Geldings, fillies and mares can be shown in either an in-hand bridle or a plain white **OR** other coloured show halter. Yearling colts (as of 1st August of the current year) may be shown in a halter or be bitted; a rubber bit is acceptable.

Foals born in the current year (as of 1st January) are to be shown in either a simple white show halter or a leather in hand halter or foal slip – **NO BITS**.

Colts/stallions aged three years and over **must** be shown in a stallion bridle with a metal bit and chain lead. The use of a stallion harness is permitted on stallions over the age of four. The judge may ask that the side reins are unclipped when in the class.

Failure to comply with any of the above rulings will result in elimination from class/show.

#### **JUNIOR COMPETITORS (under 18 as of 1st January in the current year):**

For all AHHA Junior Affiliated Ridden classes – only Snaffle bridles will be acceptable.

Riding hat or skull cap correctly done up and complying with the current hat rules **must** be worn.

Spurs must **not** be worn by junior riders (under 18 as of 1st January in the current year) or any rider of an exhibit 148cm and under. Mixed-height classes, no competitor may wear spurs.

Failure to comply with any of the above rulings will result in elimination from class/show.

#### **17. SHOWING ATTIRE FOR: IN HAND, RIDDEN AND EVENING PERFORMANCE**

##### **For in-hand showing:**

##### **GYPSY COBS**

Smart jacket (or waistcoat) and trousers, shirt and tie, gloves, hat or cap, Junior competitors, (under 18 as of 1st January in the current year) **must** wear a riding hat or skull cap correctly done up and complying with the current hat rules, suitable footwear and show cane/whip (**must not** exceed 76cm/30inches length).

##### **CLYDESDALES**

The standard handler attire in heavy horse competitions (Clydesdales and Shires) is pants, shirt, tie, jacket, hat and boots.

**Pants** – Most people in Australia show in either pale coloured moleskins or nice dress pants.

**Shirt** – Generally a collared dress shirt is worn, though women also use dressy tops without collars.

**Tie** – A tie is not always necessary, but when worn, ties are often matched to the colours the horse is wearing.

**Jacket** – A nice suit coat or horse specific riding jacket are the most common choices.

**Hat** – The type of hat you wear is completely up to you! Akubras are very common here in Australia, but you can choose any type of dress hat you like. Just make sure it fits well enough not to blow off your head easily.

##### **For ridden showing:**

Correctly secured Skull Caps/Riding Hats Nos. **AS/NZS 3838** (2006 onwards) provided they are SAI Global marked, **ARB HS 2012, All PAS015** (1998 and subsequent updates), **VG1** (01.040: 2014-12) with or without BSI Kitemark, **(BS) EN1384: 2023, ASTM F1163** (2004a or 04a onwards), **SNELL E2001** and E2016, **must** always be worn by riders when mounted. Hats should have a plain cover either Black, Navy Blue, Brown, Grey or Green.

Velvet covers are encouraged. In the interest of Health & Safety the AHHA will authorise spot checks at certain Shows and riders breaking this Rule will **not** be allowed to compete.

Hacking/tweed show jacket, shirt and tie, gloves, breeches, or jodhpurs, in **one** of the following colours: cream, beige, white or dark coloured, hair net, show cane/whip (**must not** exceed 76cm/30inches in length), jodhpur boots for juniors and long black boots for adults, riding hat or skull cap complying to the new hat rules.

For Pure Breed Clydesdales, you can either wear your in hand showing attire or the attire in the previous paragraph.

## **Grooms**

Must be appropriately dressed when entering the ring; smart trousers, a top, suitable footwear and a hat **must** be worn. Grooms will be asked to leave the ring if not suitably dressed.

## **18. THE JUDGING OF SHOWING CLASSES**

For Ridden and In Hand Breed Classes, Clydesdales and Cobs are to be judged primarily on their **Breed Type, Conformation, and Movement.**

### **JUNIOR COMPETITORS (under 18 as of 1st January in the current year):**

For all AHHA Junior Affiliated Ridden classes – only Snaffle bridles will be acceptable.

Riding hat or skull cap correctly done up and complying with the current hat rules (please see above) must be worn.

Spurs must **not** be worn by junior riders (under 18 as of 1st January in the current year) or any rider of an exhibit 148cm and under. In mixed-height classes, no competitor may wear spurs.

Failure to comply with any of the above rulings will result in elimination from class/show.

## **IN HAND BREED CLASSES**

### **GYPSY COBS**

For In Hand and Young stock Classes, exhibits enter the ring individually and perform a FLASH (high energy trot) to cover at least 2 sides of the ring/arena.

**NB:** The term FLASHING is used to exhibit the Traditional Gypsy Cob (TGC) In-hand. Upon the Steward's command, handlers will be asked to go forward with their TGC in a high energy fast trot on a loose rein to cover at least 2 sides of the arena.

Once all exhibits have performed the initial flash, they will continue to walk around the arena until they are pulled into the line-up by the steward/judge. Exhibits will be required to be stood up in front of the judge individually for their inspection. Exhibits on request should walk away from the judge, turn on the right rein and trot straight back towards and past the judge in a straight line before walking to retake their place in the line-up.

In hand classes will be judged: 60% correctness to type, conformation, and movement, 40% manners and way of going and overall presentation.

### **CLYDESDALES**

At most shows, you can expect that the competitors will be asked to walk in a large circle around the judge, then line up, then individually work out.

When walking in the circle, make sure your horse is stepping out well but do not allow it to trot. Whatever you do, don't dawdle – if the horse in front of you is moving too slowly you can overtake it on the outside. The judge needs to see the active pace of your horse in order to assess it properly.

When you are standing your horse in the lineup, make sure you're paying constant attention to it. Stand facing your horse so you can keep it 'stood up' correctly – head up, front legs square, hind legs together with feet next to one another – while also keeping one eye on the judge. When the judge moves to assess your horse, they will likely inspect the horse closely, ask you a question or two, feel the horse's legs and then request you do your workout.

Most judges will use a workout that involves both walking and trotting, generally in a line straight out from where you were standing and then back. They may also ask you to back the horse up several paces. When doing your workout, keep your focus on the horse and the pace active. Aim straight towards the judge – they will move out of the way as you get closer.

In hand classes will be judged: 70% correctness to type, conformation, and movement, 30% manners and way of going and overall presentation.

## **Most Importantly—Have Fun!**

While it's important to strive for the best possible standard when showing, if you're not enjoying yourself, there is no point spending your time and money.

Remember that everyone is there to show off their horses and enjoy their hobby just like you, so put a smile on your face and make the most of the day out with your horse!

## **RIDDEN BREED CLASSES**

### **GYPSY COBS**

TGC's are to perform an individual show. They will **not** be ridden by the judge or the judge's representative. When a TGC appears before the judge in two classes at the same show, the exhibit **must** be assessed as a separate exhibit in each class. In all ridden classes, the fall of a horse or rider will result in elimination from that class, and they must then leave the ring dismounted.

For Ridden Classes, exhibits will enter the ring together and perform the go-around as per the judge/steward's instructions. Exhibits will then all be pulled into the line-up by the steward/judge, and each asked to perform an individual display not lasting longer than 1 & 1/2 minutes. The display should include walk, trot, and canter on both reins, change of rein, halt, and stand and if required by the judge a lengthening of stride or gallop.

**Ridden Breed Classes** will be judged 60% correctness to type, conformation, and movement 40% ride, manners, and way of going and overall presentation.

**Junior Ridden Finals Classes** will be judged: 60% correctness to type, conformation, movement, and overall presentation, and 40% ride, manners, temperament, partnership, and suitability.

Judges may take into consideration the severity of the bit.

### **PURE BREED CLYDESDALES AND OTHER HEAVY HORSES**

**Aim:** to ensure that both judges and riders have the same understanding of what is expected and assessed in heavy horse ridden classes.

**This is a breed class. An assessment of Heavy Horse breed features is to be made and scored by the judge, as well as the workout, behaviour and overall impression**

Class to be judged on a points system.

## Supplementary Notes for Judges and Competitors

Approved safety helmets should be worn by competitors at all times.

Spurs and whips are optional. Choice of bits is at the discretion of the rider.

### Workout:

The workout should include a walk, trot and canter (if appropriate at judge's discretion) (on the correct lead, i.e. leading with the inside foreleg), ideally if time permits on both reins (both directions), plus a backup. The horse should be forward moving, travel on the bit and have a controlled gait. Transitions through the gaits should be smooth and the horse should finish calmly and without pulling.

### Type/conformation of the horse and its movement:

The heavy horse is a weight carrying animal, which should carry the rider with ease and safety. It should be forward moving with an active gait, strong and elevated. The horse should display strength, quality and movement which will appeal to the judge and spectator. The horse should be sound, of heavy horse type (i.e. Clydesdale, Gypsy Cob, Shire, Percheron etc) and conformationally correct for its breed.

Splints should not be discriminated against as long as they do not appear to cause unsoundness. Scars should not be discriminated against provided they do not impinge on the movement of the animal and are not too disfiguring.

### Manners and behaviour of horse

The horse should be well behaved at all times during the class, both during the workout and during the lineup, and should perform calmly and obediently while in the ring.

Disobediences such as bucking, rearing, disobeying direction or refusing to walk or stand in the workout or line up should be penalised.

### Overall appearance

To be judged on the overall appearance of the rider and horse. Competitors should be turned out neatly and to a high standard in appropriate riding attire. The horse should also be turned out to a high standard, in show condition and with decorations appropriate to its breed. The horse and rider combination should appeal to the eye and look to be working in harmony at all times.

### Allocation of Points:

Points to be allocated as follows:

Workout	25 points
Type/conformation of horse and its movement	15 points
Manners and behaviour of horse	10 points
Overall impression/appearance of horse and rider	10 points
<b>Total</b>	<b>60 points</b>

## **19. JUDGES IN HAND AND RIDDEN PROCEDURE GUIDE**

Where the class is an in-hand class only, **all** exhibits will be required to walk into the arena individually.

On command from the ring steward/judge the individual horse will be required to 'FLASH'.

The term 'FLASHING' is used to exhibit cobs. On entry to the ring, the steward will ask the animal to wait. On the steward's/judge's command, the horse will be asked to go forward in a high energy fast trot on a loose rein to cover at least 2 sides of the arena. On completion of the individual 'FLASH' the horse will be required to join the last entered horse at a safe distance.

It is noted that for OHS issues, strict attention **must** be displayed by both judge and steward and discretion used if it is deemed unsafe for an individual or horse to participate for any length of time or distance.

Caution and awareness on allowing plenty of space between horses, is advised due to the excitability this may initiate.

On completion, all exhibits will continue again in walk and will be requested to line up. The decision to pull an initial line-up or not is at the discretion of the judge.

If there is no pull, the steward may randomly select one exhibit to start the line-up, and all other exhibits should follow in their initial order.

Each competitor will then be requested to present their horse/pony in front of the judge for conformation inspection.

The animal will then be walked away from the judge and then trotted straight back towards and past the judge returning to the line-up.

### **Where the class is a ridden class only.**

All exhibits will be asked to walk into the arena on the right rein.

Upon instruction from the judge/steward exhibits will be asked to trot, canter, and change the rein.

The steward may then ask an appropriate exhibit to canter or lengthen their stride along the ringside directly in front of the judge, all exhibits must follow on (exhibits may circle prior to the canter to provide safe space). After the canter or lengthening of stride, all exhibitors must return to walk.

Should the class be large or the ring small, it may not be practical for all exhibits to perform the go around together. The judge may request the class be split with half the class standing in the centre of the ring whilst the other half performs the go around. Once completed, the group of exhibits should swap, and the go-around be repeated for the other group.

It is then the judge's decision to pull an initial line up, should they not want to pull an initial line up the steward will select an exhibit to start the line up with all other exhibits following on.

If there are both conformation and ride judge they will then start their individual judging duties.

The ridden assessment will start at the top of the line-up and once the exhibit has performed its display then it will be judged for conformation. At no time should any exhibit be judged for conformation before it has performed its ridden show.

Time should be allowed for grooms to enter the ring to enable the removal of the saddle once exhibits have performed the go around and have been lined up.

Individual ridden shows will consist of walk, trot, and canter on both reins and if appropriate a lengthening of stride. A judge can ask for a set show and if this is the case stewards must make **all** exhibitors aware of the set show.

On completion of all exhibits, if a marks sheet exists, marks will be totalled. If there is no marks sheet in use, the judge should indicate to the steward the order of placing, which should be completed on the class sheet and the exhibits pulled forward in placing order.

When all prizes/ribbons have been awarded, the judge will thank all exhibits and ask the un-placed exhibits to leave the ring, and the successful exhibits to perform a lap of honour - which will be conducted in a safe and orderly fashion but allowing the breed to demonstrate its active powerful action.

Only performance evaluated stallions are eligible to compete in any AHHA class. They **must** have a **GREEN** Stallion bridle disc on display on the **offside** of their bridle.

Judges are reminded that the carrying of excess weight by any exhibit is not good for the joints or breathing of any horse or pony, and in the interests of our horses and ponies, we do not promote the showing of over-fat exhibits. Judges are permitted to penalise any such exhibit in their marking.

For exhibits 148cm and under, the rider should be of a suitable size and weight for their mount.

In the case of young stock, a judge may ask the handler to gently pull the lips back to show the horse's teeth if they are able to do so comfortably and safely.

## **20. TCGA JUDGES PANEL**

Judges, including probationary judges, are appointed at the discretion of the TGCA Directors and the Judges Assessment Sub Committee. Appointments are renewable annually. Judges can be removed at their own request. The TGCA can upgrade or downgrade Judges at the discretion of its Directors and the Judges' Assessment Committee. The TGCA Directors and the Judges Assessment Committee reserve the right to remove judges from any category, either permanently or temporarily, without explanation or litigation.

## **21. JUDGES' RULES AND GUIDELINES**

It is a condition of judge's membership that all judges fully comprehend and abide by all AHHA/ TGCA rules and regulations as explained within this handbook including the member's code of conduct, the judge's rules, and guidelines (including any revisions to these as made and communicated from time to time) as per our Rules & Regulations Handbook.

Judges **must** have a thorough understanding of the AHHA breed standard for the Traditional Gypsy Cob (AHHA/TGCA), and its requirements and be able to select good examples of the breed in practice.

All appointments for the judging of AHHA/TGCA classes/shows **must** be adhered to. If for any reason this is not possible, it is the judge's responsibility to contact both the show secretary and the AHHA Secretary or President to find a replacement judge. A mobile phone should be carried on the day in case of emergency but **must** not be carried in the ring.

Smart sensible clothing must be worn by all judges with wet weather clothing in case of inclement weather.

Judges **must not** charge a fee for judging at any time for AHHA shows. However, judges are entitled to have expenses reimbursed which should be agreed (including airfares, travel and accommodation) with the show secretary in advance of the show. If the show organisers offer payment for their services as a general rule of their shows, then that is fine.

Where mark sheets are used, then under **no** circumstances should any changes be made to any marks given to any exhibitor. Should the steward have misheard and written the wrong score on the mark sheet, then the score **must** be corrected, and **both** the steward and judge initial the mark sheet next to the amended score.

**All** Judges will always be courteous and diplomatic to competitors and stewards throughout judging.

It is expected that Judges help, advise, and encourage novice owners/handlers new to the show ring. TGCA/AHHA shows attract many novice handlers who have little or no understanding of what is required. Support, encouragement, and advice will ensure we have repeated entries from all competitors.

It is suggested that a minimum of tactile judging is to be used to reduce the possibility of passing infection and for health and safety reasons.

A judge **must not** judge and compete in any class on the same day at any show.

**No** judge should judge an exhibit that they have bred/owned/leased/loaned. Where a judge has produced/shown or received any financial gain from an exhibit then this must be at least 24 months prior to the date of the show. Ancillary services such as stud fees and or group teachings are exempt (where the group consists of 3 or more persons).

The breed temperament is of a calm, kind disposition. Bad manners and ill-tempered horses should be asked to leave the ring. If a stallion is showing unruly tendencies including bad handling, then they must leave the ring. There are to be **no** exceptions to this rule whatsoever. Advice after the class if sought should be encouraged, so we can help improve handlers and their horses' showing practices for the future.

In any cases of bad behaviour in ridden or in-hand classes where other competitors or animals are at risk, the steward may be directed to ask the exhibitor to leave the ring. Stallions should have **no** exception made for them and handlers must always be in control.

### **TGCA ELITE INTERNATIONAL JUDGE PANEL**

Admission to the AHHA Elite Panel is strictly by invitation only.

The TGCA reserves the right to remove a judge from the TGCA Elite International Judges Panel at any time if the AHHA Code of Conduct (as detailed in the Members Handbook & Judges Rule book) is breached.

### **EVALUATION PANEL**

Admission to the TGCA Evaluations Panel is strictly by invitation only.

The TGCA reserves the right to remove a judge from the TGCA Evaluations Judges Panel at any time if the TGCA Code of Conduct (as detailed in the Members Handbook & Judges Rule book) is breached.

### **JUDGES INSURANCE**

All current, fully paid-up TGCA/AHHA Panel Judges will be covered by the AHHA Insurance Policy whilst performing AHHA judging duties for the period of their membership. It is advisable that judges also hold their own accident and personal insurance to cover them for such activity.

### **STEWARDS RULES AND GUIDELINES**

Anyone who would like to undertake any stewarding duties should contact the AHHA Admin or AHHA Secretary.

Stewards should carry a copy of this handbook and make themselves aware of AHHA rules.

Stewards should carry with them a spare pencil/pen.

It is the responsibility of the ring steward to ensure that all stallions entering AHHA affiliated classes have their valid stallion disc present in the ring. Only performance evaluated AHHA stallions can compete in AHHA classes.

Stewards should always be polite to both their judges and competitors.

Stewards will, when requested by the judge, instruct competitors as to what they are required to do.

For ridden classes, they will instruct them when a change of rein or a change of gait is required.

In-hand classes, they will instruct them when to perform the initial trot up/flash. For both classes, they will instruct competitors when and how to form the line-up.

Stewards should **not** stand in a way which obstructs the Judge's view.

Ring stewards are responsible for having the awards ready for the judge to present in the correct order on completion of the class and recording the class placings.

Where a class is to be judged using a mark sheet then it is the stewards' responsibility to ensure the marks are written correctly and when added together to decide class placings calculations must be double-checked.

All results sheets **must** be returned to the show secretary by the steward, or where a runner has been officially appointed, to the runner on completion of the class.

### **CONFLICTS OF INTEREST**

Exhibitors will **not** exhibit under Judges where an actual or apparent conflict of interest may affect the judge's decision. An actual or apparent conflict of interest is defined as exhibiting a horse which:

1. has been bought or sold by the judge either as owner or agent.
2. is owned in whole or part by the judge or by a member of the judge's family or business partner in a business venture.
3. has been bred by the judge or is the property of a breeding organisation in which the judge is or was an employee.
4. has been leased by the Judge at any time.
5. has been regularly trained, examined, or treated by the judge in a professional capacity.
6. has been shown/produced by a member of the Judge's immediate family during the last twenty-four full calendar months. The following are classed as immediate family. Grandparents, Step Grandparents, Parents, Stepparents, Partners of Parents, Parents in Law, Legal Guardian, Husband, Wife, Cohabitee, Partner, Brother, Stepbrother, Brother-in-Law, Sister, Stepsister, Sister-in-Law, Son, Stepson, Son in Law, Daughter, Stepdaughter, Daughter in Law.
7. is the subject of an ongoing negotiation to buy or lease, or a provisional purchase condition to which the Judge is party.
8. an exhibitor/owner must not enter any horse under a Judge during the twenty-four full calendar months after that judge has regularly professionally handled, shown, or produced that or any other horse for that exhibitor/owner. Training clinics where the judge does not touch the horse are excluded from this rule.
9. if a handler/rider produces or shows a Judge's own horse, that handler/rider must not bring any horse under that judge during the next twelve full calendar months
10. is sired by a stallion which is/has been in the ownership of the judge during the current calendar
11. has been bred to by the judge during the current calendar year.

Handler or Rider **not** to have been paid for showing or producing any horse associated with the Judge, this includes any remuneration either as employment, Use of Stallions for Stud, casual showing, or any kind-kind benefits whatsoever.

## 22. SAFEGUARDING POLICY

### **Our Commitment and Policy**

We take the safety of children and young people very seriously. They are the future of our industry, and we all have a duty of care to safeguard their welfare.

After all, they should be able to enjoy sports and recreational activities like horse riding in a fun, safe environment and be protected from harm.

The AHHA has its own AHHA Safeguarding Policy and adheres to the Equestrian Australia's National Integrity Framework.

We have appointed officers to ensure that it is implemented throughout our industry and provide a support system. This will allow anyone to report concerns they may have about poor practice or possible abuse.

If you have a concern, the AHHA encourages those who participate, volunteer and work in equestrianism to report any concerns they may have about a child or young person or Adult. Any concerns can be reported directly to the AHHA. Contact details can be found below.

#### **AHHA Safeguarding Team**

0402 288 371

[ahhssecretary@outlook.com](mailto:ahhssecretary@outlook.com)

If a child or young person is in immediate danger or needs medical attention, 000 should be called. Serious concerns can be reported to Child Protection Units within local police forces or Child Protection.

Kids Helpline 1800 55 1800

Lifeline 13 11 14

## 23. DATA PROTECTION ACT STATEMENT

The [\*Privacy Act 1988\*](#). Notification of processing of personal data.

It is required under the *Privacy Act 1988* to advise individuals about the processing of personal information i.e., why this information is being collected, how this information will be used and the circumstances in which it will be disclosed.

We use personal membership information to: respond to enquiries, provide you with the specific information you have requested, advertise as you have requested and publish within class results or to keep you up to date with news or about activities which you might find of interest. We may also use the information internally for administrative purposes and, when relevant, to inform our Head Office.

By providing us with your personal details and information, you consent to the collection and use of this information, as outlined in this statement and in accordance with the *Privacy Act 1988*. On occasion this privacy statement might be updated, this will not be deemed to affect your consent, unless you specifically contact us to say otherwise.

Your personal data may be shared with Government Departments and Local Authorities to facilitate strategic planning and analysis within the equine sector. Your personal details [i.e., name and address of horse owner] will always be treated as confidential. All data supplied will be kept secure.

The AHHA respects the rights of all its members and is registered under the *Privacy Act 1988*. We will **not** act in contravention of our obligations under the *Privacy Act 1988*.

The AHHA will need to use the information provided by you for its own internal administration and analysis but will not divulge any individual details to other third parties without your consent.

## **24. AHHA DISCLAIMER**

Only AHHA Head Office statements and affiliations will be valid and binding. All information and online content are owned and copyrighted to the AHHA Inc. The AHHA holds absolutely no responsibility for the loss of any documentation whatsoever and gives no warranties, conditions, guarantees or representations, express or implied, as to the completeness or accuracy of the advice and information contained on the Website or any website to which it is linked, or any advice from any AHHA member.

## **25. DISCLAIMER OF LIABILITY**

Neither the AHHA Inc nor any of the Committee will be held responsible or liable for any accident or infringement of the AHHA rules and regulations as explained within this handbook, however, caused. This is a comprehensive limitation of liability that applies to all damages of any kind, including (without limitation) compensatory, direct, indirect, or consequential damages, loss of data, income or profit, loss of or damage to property and claims of third parties.

Save for death and/or personal injury caused by the proven negligence of the AHHA Inc or by anyone for whom they are legally responsible, the AHHA Inc, nor any agent, representative or show organiser of these bodies accepts liability for any loss, damage, accident, injury or illness to any animal, competitor (riders or handlers), owners, producers, spectators or any other person or land and/or property whatsoever.

## **26. DISSOLUTION**

In the event of the Dissolution or winding up of the company, after the satisfaction of all its debts and liabilities, the assets remaining may be distributed to the members or otherwise as decided at the time.

## **27. GOVERNING LAW AND JURISDICTION**

All Competitions affiliated with the AHHA will be governed by Australian law.

The Organiser and Entrant irrevocably submit to the exclusive jurisdiction of the Australian courts.

## **28. TRADITIONAL GYPSY COB BREED STANDARD**

The AHHA uses the TGCA UK's breed standards when judging both Pure and Part Bred Gypsy Cobs.

A strong, active cob, full of quality and spirit coupled with an abundance of flowing mane, tail, and leg hair.

### **GENERAL APPEARANCE**

The Traditional Gypsy Cob should be a strong, sturdy, and powerful cob coupled with an abundance of luxuriant flowing mane, forelock, tail, and leg hair known as feather.

Traditional Gypsy Cobs should always have plenty of heart room, and a deep girth to match. They should display ample bone and be well-muscled with a broad compact body and powerful hindquarters.

Traditional Gypsy Cobs should have a kind, willing, intelligent, and gentle disposition. They are renowned for their patient, kind, and sensible nature. Traditional Gypsy Cobs are extremely versatile, suited to both driving and riding they are ideal family horses.

### **COLOUR AND MARKINGS**

All Colours and Markings are permitted

### **HEAD**

Neat, small, sweet, noble and in proportion to the body.

Broad between the eyes which should be bright and alert, displaying a large kind eye. Blue eyes are acceptable.

## **EARS**

Small, neat ears slightly incurving.

## **NECK**

Strong and slightly arched and of a medium length. The neck is to be well muscled and well set onto a good sloping shoulder. Stallions should display a bold outlook with a well-arched crest.

## **SHOULDERS**

Well laid, long, sloping shoulders. Should not be fine at the withers.

## **BODY**

Short coupled and a strong back of good outline, muscular loins, good deep well-sprung ribs, which are round from the shoulders to the flank. Plenty of depth from the wither to the girth. The chest must be good and wide.

## **HINDQUARTERS**

Deep, lengthy, and powerful and displays an apple shape. The second thighs are well-muscled and let down. The tail should be well set on – not too high, nor too low.

## **FEET, LEGS AND JOINTS**

Feet of good size, round and well-formed, open at heels and well concaved. Pasterns are nicely sloping and of good length. Forelegs should be very well-defined and muscular. Well-defined flat broad knees. Plenty of bone below the knee (eight inches at least). Hocks should be well-defined and not coarse. Canons should be short with clearly defined clean flat bone.

## **MANE TAIL AND LEG HAIR (FEATHER)**

A NATURAL abundance of long flowing mane, forelock, and tail hair. Feather (leg hair) should start from the back of the knee and hock joints and cover the entire hoof. Hair should be straight and silky, curly hair is less desirable, and course hair is not desirable.

## **MOVEMENT**

Clean, active, straight, and true. Going forward on —all fours with tremendous energy. The knee and hock should be powerful with a workmanlike action with hind legs flexed well under the body for powerful drive.

## **HEIGHT CATEGORIES**

**Note: All height categories refer to height at maturity**

Section A: Under 132cm

Section B: exceeding 132cm but not exceeding 148cm

Section C: exceeding 148cm but not exceeding 158cm

Section D: exceeding 158cm

## 29. PART-BRED TRADITIONAL GYPSY COBS STANDARDS

- Ponies (148cm and under): 50% TGC, 50% individual breed
- Natives: 50% TGC, 50% native pony breed
- Sport pony: (148cm and under) 50% TGC, 50% recognised sport breeding
- Sport horse (exceeding 148cm): 50% TGC, 50% recognised sport or performance breeding
- Show cob: 50% TGC, 50% any breeding which can be termed as show cob type, to be shown hogged and trimmed (no height limit)
- Drum (158cm upwards): ideally 50% TGC, 50% Shire, Clydesdale, or other recognised heavy horse breed, or as decided by the AHHA.

In hand classes will be judged: 60% correctness to type, conformation and movement, 40% manners and way of going.

Ridden Classes will be judged 60% correctness to type, conformation and movement 40% ride, manners, and way of going and overall presentation.

### **30. PURE BREED CLYDESDALE BREED STANDARD (CCHSA)**

Uniformity of type has long been a marked characteristic of the Clydesdale, and there is no breed of heavy horse so famous for its quality, cleanness of joints, hardness of bone, cleanness and correct setting of hock and length and slope of pastern, whilst as for action the Clydesdale is unrivalled. The general appearance of the Clydesdale can be assessed whilst the horse is standing in the optimal position of supporting itself equally well on each leg.

The Clydesdale is also observed when in motion, at walk and trot. The preferred characteristics are as follows:

**The height** of the Clydesdale horse should range to over 17 hands. When the horse is fully matured it should be evenly balanced. Viewed from the side, the body should show plenty of depth and from the front or rear should appear broad and thick. The depth of the body, through the chest and length of leg, should be approximately the same. Such proportions allow the Clydesdale's weight to be used to the best advantage.

**Quality** in the horse is manifested especially in the bone, skin and hair. As well, the general conformation should indicate a degree of superiority. The bone of the Clydesdale should be hard and dense, with a strong, compact cellular structure. The hair or "feather" down the back of the cannon is an indication of the quality of the bone, and should be long, fine and straight.

**The head** of the Clydesdale should be in proportion to the body. The face may be straight or slightly Roman nosed. The muzzle should show thin rather than heavy lips, which should come together evenly and with a wide-open nostril. The eyes should be rather oval than round, prominent, reasonably large and have thin smooth eyelids. When the iris of the eye is colour less, the eye appears to be white with a "wall eye" as a result. The sight of such an eye is quite as good as that of having a dark coloured iris. There should be plenty of width between the eyes and the forehead should be slightly arched, tapering away above the eyes to the poll. The ears should be pointed, of medium size and thin of texture, having a covering of fine hair.

**The neck** should be of moderate length, muscular yet not too thick, arched and well laid into the shoulder. The head should merely set into the neck at the right angle. A good head, neck and shoulders denote character, giving the animal a good outlook.

**The shoulders** should be moderately sloped and provide a sufficient collar bed. The shoulders should be fairly wide, well-muscled, and the top should be carried close to and tapered into the back. The arm of the Clydesdale should be comparatively short, wide and muscular. This places the leg sufficiently under the body to provide the desirable position and action. The knee, viewed from the front, should be broad and flat, tapering to the cannon and, when viewed from the side, should be straight from the shoulder to the fetlock joint. The tendon at the back of the knee should contribute to give depth and strength.

**The cannon** of the foreleg should be long, wide, lean and flat as viewed from the side. The tendons should show prominently. The long hair or "feather" should spring from the back of the tendon and not from the sides of the cannon. It should be soft to touch and straight. The fetlock should be wide, when viewed from the side, and narrow viewed from the front, fine and well directed. The pastern should be fairly long and sloping, so as to relieve concussion in the course of action.

**The foot** must be sound and healthy. A good hoof head, with wide open heels and strong quarters, is preferred, otherwise a horse may have a tendency to develop unsoundness. The feet should preferably receive attention from when the animal is a foal until it is fully matured.

**The chest** of the Clydesdale should be deep, wide, low, and of large girth, indicating strong constitution with ample space for vital organs. The back should be short, broad and strongly supported, and slightly inclined upwards towards the croup. The loin should be short, wide and strongly muscled. This portion of the back should be short and as wide as possible, and the ribs long, well sprung and close together.

**The flanks** should be low and full.

**The hind quarters** are the great source of driving power. The hips should be wide, but in harmony with general body proportions, and well-muscled. The croup should be long, as seen from the side, wide as viewed from behind, and with sloping arch from the hips to the setting of the tail. It is important that the tail be attached high.

**The thigh** should be short, but heavily muscled. The hock is one of the most important points of the horse, as it is in this joint that the strain on the muscles, during action, is concentrated. The hock, should be broad, viewed from the side, and narrow, viewed from the front, its point being prominent, and the joint as a whole, when viewed

from the side should be well supported by a wide cannon below. The hock should be turned slightly, and close to each other, the cannon straight not 'cow hocked' when viewed from the rear. The hocks should not show fullness or swelling.

**The hind cannons**, like the front ones, should be broad when viewed from the side and thin when viewed from the front. They should be perpendicular, in line with the hind quarters. The hind fetlocks, as in the case of the front ones, should be wide, whilst the pasterns are less oblique than those of the fore legs. The hind feet are somewhat smaller than the front ones, not as round, but with good hoof heads and wide open heels.

**The hind legs**, like the front ones, should be set into the body, not on the outside of the quarters, but well under, so that the muscles on the quarters project wider than the muscles on the thighs. The toes of the hind feet should incline slightly outward. There should be a good length from the point of the hock to the ground.

**The action of the Clydesdale** should be even; the hind and fore action should be in unison. The hind feet should be planted forward as deliberately as the fore ones, which should be evenly carried forward. At the walk, the hind foot should cover the imprint of the front foot as a minimum. Short stepping is a fault in the working horse. The hocks should be turned slightly inward. In trotting, the Clydesdale horse should bend the legs at the knees and hocks and, from the hind view, the inside of the hooves or shoes should be seen at every step.

*Reference: An article printed in August 1928 by the CCHSA in their "Horse News Annual" in relation to a description of the Clydesdale.*

*These Breed Standards were approved by the Commonwealth Clydesdale Horse Society Australia Inc. Federal Council in September 2001.*

### 31. THE PART/CROSS BREED CLYDESDALE BREED STANDARDS

The Clydesdale Cross or Part breed Clydesdale is a horse derived from Clydesdale bloodlines (different societies and associations require different levels for recording/registrations) and those of another breed or mixed breed. Ideally the progeny will display desirable characteristics and qualities of both the Clydesdale and the other breeds.

With such diversity, a major problem has been faced with trying to produce a breed standard for these particularly striking individuals. The uniformity of type is the biggest hurdle to be overcome and if we categorise the Part breed Clydesdale into *light*, *medium* and *heavy* depending on the amount of Clydesdale or other heavy breed blood they possess and therefore their appearance when presented. Height of the animal could be anything from 15 hands to 17 hands, but possibly less, if crossed with a native breed pony for instance. It should present as an evenly balanced individual and should show plenty of depth.

**Quality of bone**, skin and hair should be at a high level and feather should be present in some form, the degree of which will be defined by the level of heavy horse present in the individual.

**The head** should be handsome and in proportion to the neck and body. The face may be of any type straight, slightly Roman or dished also depending on the cross.

**The neck** should also be in proportion to the animal, muscular yet not too thick. The neck shoulders and head should blend together seamlessly giving the animal a fantastic outlook.

**The front legs** should be correct when viewed from all sides, cannons tending longer, tendons should show prominently, and feather should be coming from the back of the tendon and should be soft to touch and straight. The pastern should be a continuation of the hoof and should be fairly long and sloping correctly to relieve concussion during the course of the horse's movements. The feet should be sound and healthy.

**The chest** should be deep, wide low and an adequate girth should be present depending on the height of the animal.

**The back** should be also well proportioned to the animal and have enough length, width and strength to support ridden or driving pursuits depending on what the individual horse is used for.

**The hind quarters** should be strong and well-muscled, and the hind legs should be correct when viewed from all sides.

**Finally, the action** of the horse should be even and be in perfect unison at all gaits. The Clydesdale Cross/Part bred Clydesdale should have a swagger at walk, a spring about it at trot a comfortable canter and an absolutely amazing gallop.

Written by Tony Cummins (*As Eirinn Clydesdale and Sporthorse Stud*)

## 32. THE DRUM HORSE BREED STANDARDS (I.D.H.A)

The Drum Horse is a combination of any of the following breeds: Shire, Clydesdale, and Gypsy Horse, where the Gypsy horse does not exceed 50% of the total make-up or fall below 6.25%. Horses with greater than 50% Gypsy or less than 6.25% Gypsy will be placed in the Foundation Drum Book.

**General Appearance:** The overall impression of the Drum Horse should be one of an elegant heavy horse of great strength and agility. The Drum Horse is a heavy riding horse and should therefore display the athleticism to allow for competitiveness in all ridden and driven disciplines. The Drum should be a large, well-muscled horse of medium to heavy weight, with good quality bone, an athletic body, a kind expression, and abundant hair (including heavy “feather” on the legs).

**Size:** The Drum Horse should be a large, athletic animal capable of excelling in a variety of equine disciplines. To achieve this goal members are encouraged to select breeding stock of a size that will help ensure their Drum Horses will reach the desired mature height of 16 hands or taller.

**Disposition:** The Drum Horse should display good character and be a willing and sensible partner.

**Colour:** Drum Horses may have any base colour and may be solid or coloured. There is no preference given to coloured horses over solid-coloured horses.

**Hair:** Mane and tail should be natural and abundant. Feather is a required characteristic of a Drum Horse. Feathering should preferably begin above the fetlock joints and start at the back of the knee and hocks, as well as run down the leg to cover the entire hoof. Feather should be silky and soft and may be either straight or curly. Trimming of the mane, tail, and feather is not desired, unless required for a discipline in which the horse in question competes. Clipping or trimming of bridle paths, belly hair, jaw and ear hair is permissible and up to each individual owner/breeder. **Docking of tails is not permitted\*.**

**Movement:** The ideal Drum Horse should move naturally, with forward impulsion and presence, during all three gaits:

- **Walk:** Horse should walk flat with a straight four-beat, ground-covering gait. Stride should be consistent and balanced.
- **Trot:** The trot should be coordinated, straight, and balanced. There should be two distinct beats in which front and hind legs are moving diagonally. Action at the knees may be snappy and naturally animated, or regular and extended. The Drum Horse should use his hind end well, and hocks should be powerful and work close together.
- **Canter:** The canter should be a fluid three-beat gait, exhibiting balance, cadence and strong use of the horse's hindquarters.

**Head:** The head should be attractive and in proportion to the body. The forehead and poll should be wide, but not so wide as to lose the appearance of overall proportion to the length of the head. The muzzle and jaw should be square, and tie in cleanly to the rest of the head. The upper and lower lip should meet, and the horse's bite should be even. The ears should be attractive and in proportion with the head and carried alertly. The eyes should appear expressive and kind and should be an appropriate size in relation to the horse's head. Eyes may be any colour. Both convex and straight profiles are acceptable, given they are appropriate for the horse's body type.

**Neck:** The neck should be long, well-muscled, and in proportion to the horse's frame. Throat latch should be clean, allowing for good flexion at the poll. The length of the neck should be well proportioned in comparison to the length of the back and should tie in smoothly at the shoulder and withers.

Stallions may exhibit a masculine crest in proper relationship to the size and thickness of neck. Mares should have a more

refined, feminine head and neck.

**Chest:** The chest should be deep and as broad as the shoulders, balanced in appearance compared to the rest of the body.

**Shoulders:** The shoulders should be set far enough apart to allow for each front leg to be centred under each point of the shoulder. Shoulders should be level and in balance with each other. The slope of the shoulder and the slope of the pastern should ideally be the same angle (as close to a 45–50-degree angle as possible).

**Withers:** Withers should be average in height (not too high or low) and well-defined, with a generous layer of muscle. They should be sloping, and preferably lie further back than the elbow, to allow for greater scope of motion in the forelimbs.

**Back, Loins, and Croup:** The back should be strong and in proportion with the horse's overall frame and build. The back should be half the length of the underline. The back should tie in well with the loins, which should be wide and strong on the mature horse. The loins should lead fluently into the croup, which should have a slight downward slope. The croup should not be short or steep/pointed, nor overly round.

**Barrel:** The barrel (or the body) should be well-rounded with long, well set ribs. It should be broad and deep, giving a round appearance.

## **HOOVES AND LEGS**

**Front Legs:** When viewed from the front, front legs should be set parallel to each other and far enough apart to allow one hoof width in between. When viewed from the side, legs should be straight to the fetlock joint. The knee should be slightly wider than the leg itself, and “flat,” as opposed to “round,” in appearance. The cannon bone should be half of the length of the forearm. Pasterns should ideally be the same angle as the shoulders.

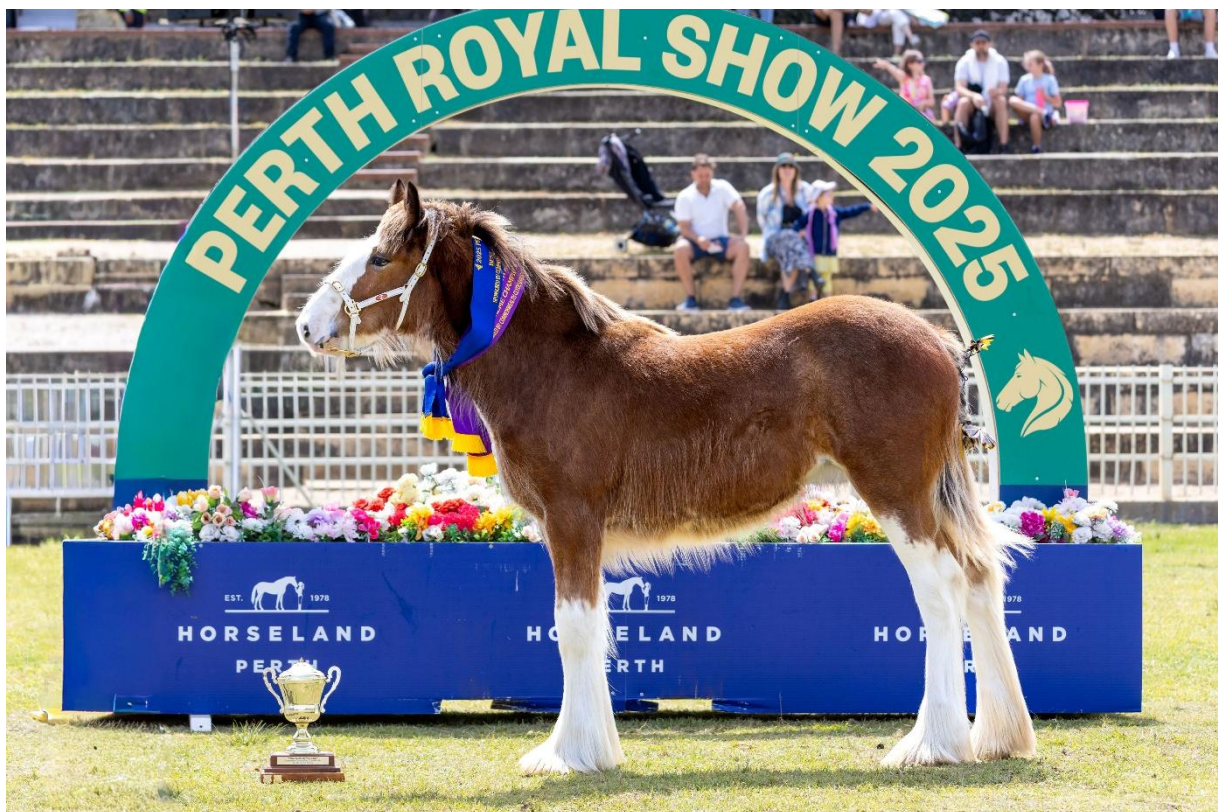
**Back Legs:** When viewed from behind, the back legs should display a “draft horse hock set,” where the toes can be slightly turned out, but should not be cow hocked or sickle hocked when viewed from the side. When the horse is standing square and viewed from the side, the hind legs should be set directly under the hindquarters, with the point of the hock directly beneath the point of the buttock. The hock should be flat in appearance with tendons clearly defined, and ideally a little higher than the front knee. The cannon bone in the rear leg should be slightly longer than in the front legs.

**Hooves:** Hooves should be large enough for soundness, stability and weight-bearing, but not exaggerated in proportion to the horse's build. Heels should be open, and hooves should be well shaped to provide long years of sound use.

33. **EXAMPLES OF A SUPREME GYPSY COB AND CLYDESDALE**



**Above: Example of a Supreme Champion Gypsy Cob – Bennette’s Gypsy Cob Stud**



**Above: Example of a Supreme Champion Clydesdale – As Eirinn Sporthorse Stud**

